

Sunset

LIVING IN THE WEST | HOME | TRAVEL | FOOD | GARDEN

Fall pumpkins

Easy designs and perfect ways to display them

Tour our Tahoe
Idea House

Hearty autumn
soups and stews

Quick color for
your garden

Top 10 beach walks



OCTOBER 2007

Special section Idea House

Breezes cool the house and the main living spaces, which open to a long concrete terrace inlaid with strips of steel. A rammed-earth wall capped with stone forms a bench around the firepit; pillows covered in indoor-outdoor Sunbrella fabric add comfort. Solar panels are fixed to the standing-seam metal roof.

BRINGING NATURE INTO OUR HOMES is one of the best things about living in the West. The *Sunset Lake Tahoe Idea House*—located in the scenic, meadow-oriented setting of Gray's Crossing, a custom-home community in Truckee, California—expresses that concept everywhere. The house is full of earthy materials and textures, colors inspired by the ever-changing landscape, natural light from every possible angle, and walls and windows that blend with the outdoors. An open floor plan in the central part of the house is perfect for entertaining large groups of friends or relaxing with family. Private retreats for parents, kids, and guests provide serene places to recharge. >76

Ultimate Sierra retreat

Rugged yet sophisticated, elegant but casual, the *Sunset Lake Tahoe Idea House* takes its design cues from the breathtaking scenery that surrounds it

BY KELLY BARTHELEMY PHOTOGRAPHS BY THOMAS J. STORY



Entry

Guests make their way to the front door on floating concrete platforms surrounded by greenery. The exterior fir

beams extend into the house, visually connecting inside and out. The kids' loft is wrapped in all-weather James Hardie siding.

Outdoor spaces

The front entry is through a courtyard beside an existing ponderosa pine. A generous front porch makes the space feel welcoming. The garden hints at the expansive Sierra landscape on the other side of the house.

Outdoor sofa

The rammed-earth "couch" around the firepit appears to grow out of its setting. >92



Spa tub

A Japanese *ofuro* (soaking tub) is outside the master bedroom on the EverGrain deck.



Water feature

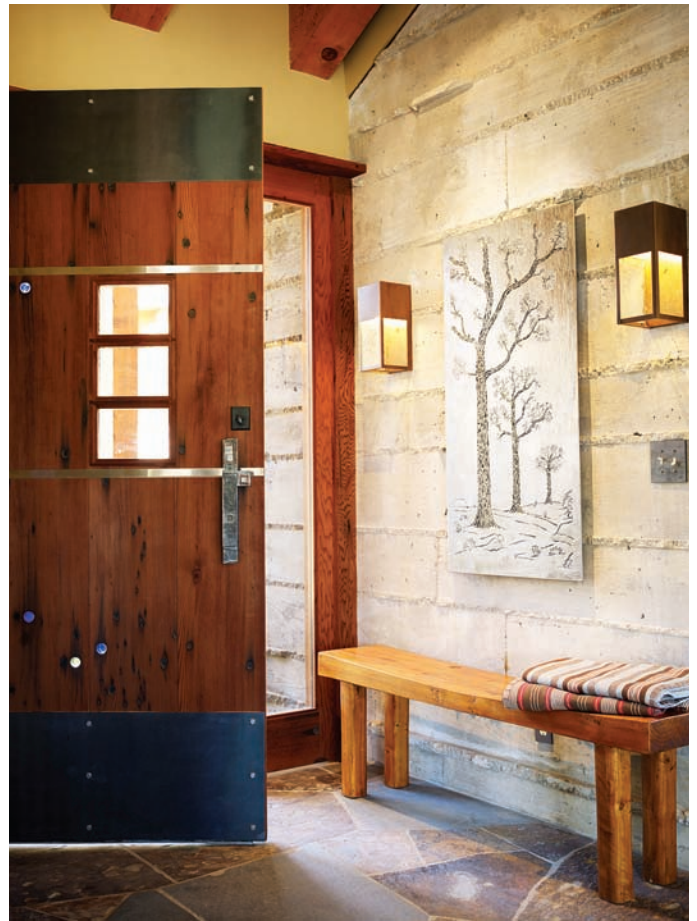
Recalling gold-mining flumes, this runnel-like recirculating fountain uses water from a buried cistern.



Home | Idea House



Accessed from the garage, the mudroom serves as the family's entrance. Eldorado Stone veneer, slate floor, and wood create a warm welcome. **RIGHT** Guests use the metal-and-wood front door.



Mudroom and main entry

The first minutes inside a house help set the tone for how you feel throughout. Calming, orderly, serviceable entries allow you to unwind and relax. This house has a casual entry for the family and a more formal one for guests.



THE PLAN The house embraces a courtyard (with the front door at the center) and follows a meandering path of discovery with diversions along the way, like the screened porch off the kitchen and the sun terrace off the living room. **THE TEAM** **Developer** Gray's Crossing (grayscrossing.com or 800/211-5141) **Architect** Faulkner Architects (faulknerarchitects.com or 530/582-7400) **Builder** Robert Marr Construction (robertmarrconstruction.com or 530/587-2232) **Interior design** Spirit Interior Design, Cathy

Nason, ASID, and Katherine Elkins (cathynasoninterior.com or 530/587-0948) **Landscape architecture** Shades of Green Landscape Architecture (shadesofgreenla.com or 415/381-1959) **TOUR THE HOUSE** 9–5 Fri–Sun through Oct 28; \$15, \$5 ages 6–12. Visit sunset.com/ih or call 800/786-7375 for directions and more details. Proceeds benefit Truckee Tahoe Community Foundation Queen of Hearts Women's Fund (ttcf.net or 530/587-1776). **RESOURCES** See page 146. ■